



- **Noise, excessive vibrations and water leakages can be caused by incorrect installation.**
- **Never move the appliance by carrying it at the worktop.**
- **Installation of the washing machine requires at least 2 persons.**

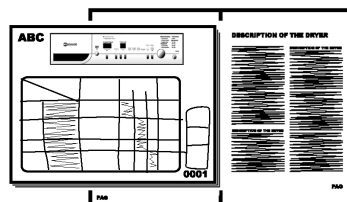
- Read this "INSTALLATION GUIDE" before operating.
- Keep this "INSTALLATION GUIDE" for future reference.
- Read the general recommendations about disposing of packaging in the Instructions for Use.

## PARTS SUPPLIED

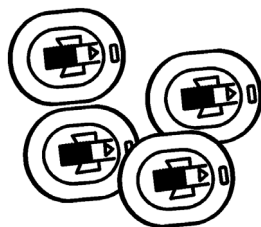
*Bag with small items*



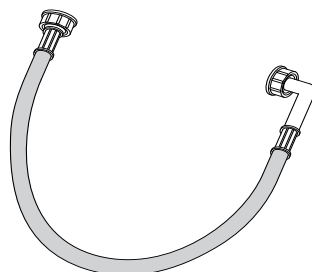
*Instructions for Use*



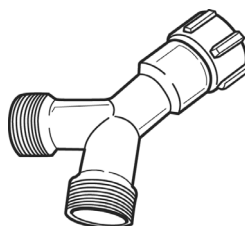
*4 plastic caps*



*Inlet hose (inside the machine or already installed)*

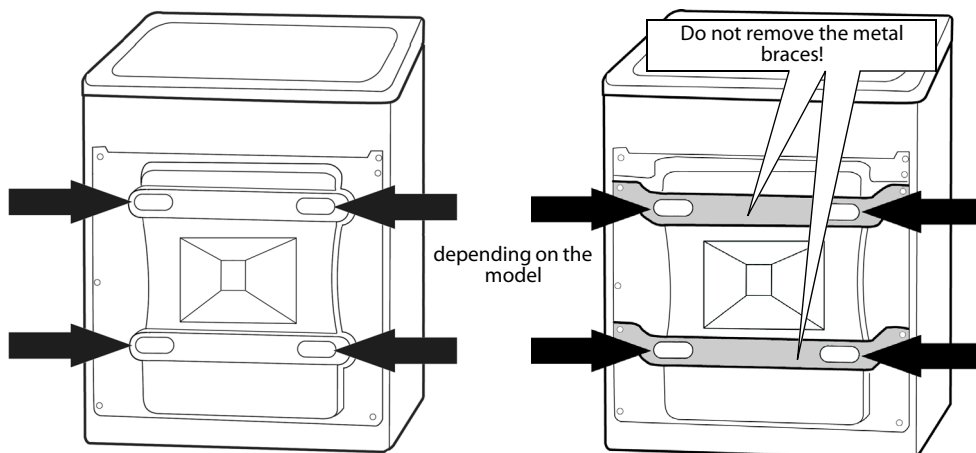


*Y-adapter (only supplied for certain models)*

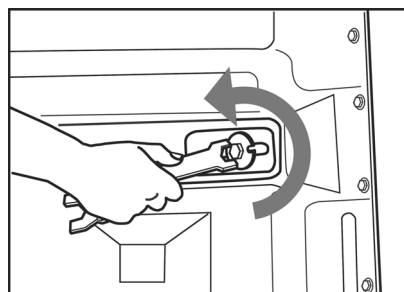


## **IMPORTANT: FIRST REMOVE TRANSPORT BOLTS!**

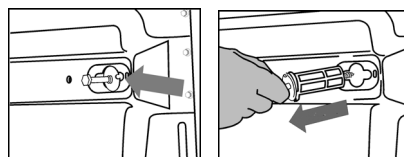
- Not removed transport bolts cause damages to the washing machine!  
**Keep the transport bolts for further transporting of the washing machine; in this case refit them in reverse order (take care that you refix the whole transport bolt, with the plastic part, and not only the screw).**



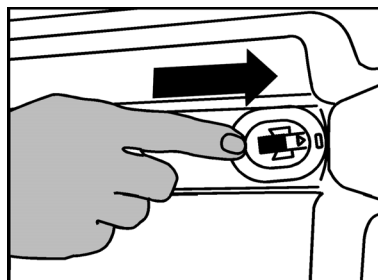
1. - Unscrew the 4 screws of the transport bolts with a 12 mm wrench; the screws are quite long and you have to screw a while until you can release them.



2. - Move the screws to the centre of the holes and remove them by pulling them out.



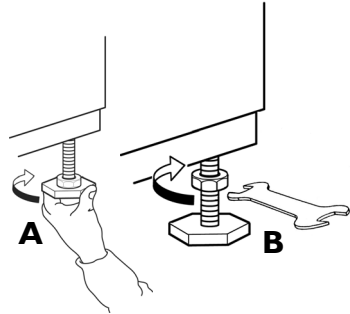
3. - To close the holes, insert the supplied plastic caps in the wide part of the holes and push them towards the edge of the appliance, until they click into place.



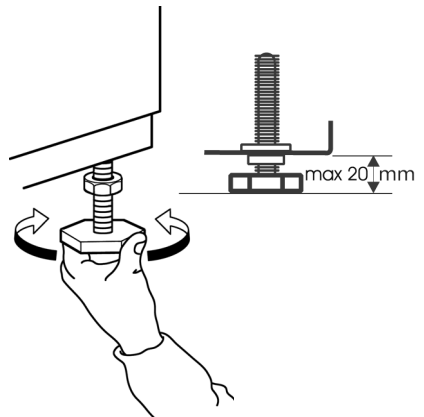
## ADJUSTMENT OF THE FEET

- The appliance must be installed on a solid and level floor surface (if necessary use a spirit level). If the floor is wooden or floating, distribute the weight by placing it on a sheet of plywood measuring at least 60 x 60 cm and thickness of at least 3 cm which is screwed to the floor. If the floor is uneven, adjust the 4 levelling feet as required; do not insert pieces of wood etc. under the feet.
- During the process of adjusting the feet, a second person must help you and firmly hold the washing machine in a tilted position.

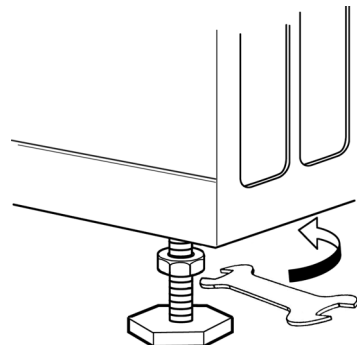
4. - Screw out the washing machine's feet by hand (A) with 2-3 clockwise turns and then slacken the locknut clockwise by means of a 13 mm wrench (B).



5. - Adjust the height of each foot by revolving it. Observe that the distance between the bottom of the washing machine's cabinet and the floor must not exceed 20 mm.

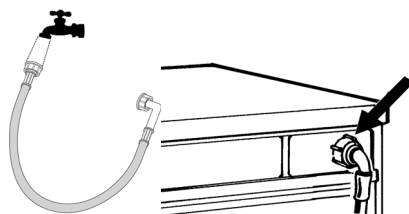


6. - Important: tighten the locknut by turning it counterclockwise against the appliance cabinet.



## CONNECT THE WATER INLET HOSE

7. - If the water inlet hose is not already installed, it must be screwed to the appliance.  
If your washing machine has one inlet valve on the back: connect it to cold fill only.

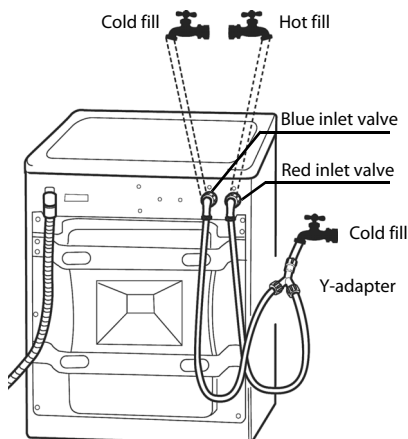


8. - If your washing machine has two inlet valves on the back, **you must connect both valves to the water supply:**

- either connect red inlet valve to hot fill tap and blue inlet valve to cold fill tap
- or connect both inlet valves to cold water tap by using a Y-adapter.

Make sure all connections are tightly fixed.

Screw the inlet hose **by hand** to the tap and to the inlet valve and tighten the nut. **Do not use any tools for fixing the inlet hose.**

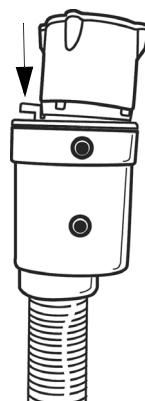


### Attention

- No kinks in the hose!
- The appliance **must not** be connected to the mixing tap of an un-pressurized water heater.
- Check water-tightness of connections by turning the tap completely on.
- If the hose is too short, replace it with a suitable length of pressure resistant hose (1000 kPa min, EN 61770 approved type).
- Check the inlet hose regularly for brittleness and cracks and replace if necessary.
- The washing machine can be connected without a non-return valve.

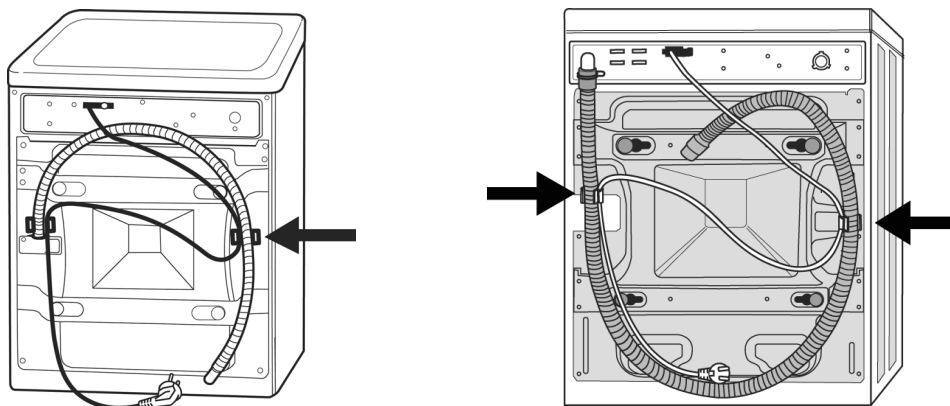
### - For models with Water Stop hose:

If the flexible hose is too short, replace it with a longer Water Stop hose available through our After-Sales Service or from your dealer.  
If your water stop hose has a release lever (see arrow), you must press the lever while unscrewing the hose.

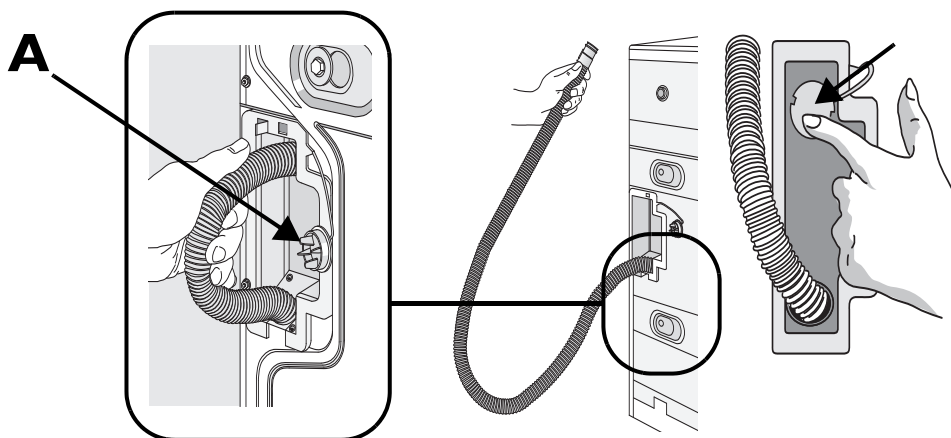


## CONNECT THE DRAIN HOSE

9. - Unclip the drain hose from the holders marked by the arrows (depending on the model).



- If the drain hose is installed inside your washing machine, pull the hose completely out of the holder and close the opening with cap "A" attached.



- 10.- Firmly connect the drain hose to the siphon or standpipe for drain water. If necessary, you can get a "U-bend" (which is fixed at the very end of the drain hose) over our After-Sales Service.



### **Important**

- Make sure there are no kinks in the drain hose.
- Make sure that the hose is firmly connected to siphon or standpipe.
- Height for fixation of drain hose end: minimum 60 cm, maximum 125 cm.
- To make an extension, use a hose of the same type and secure the connections with clips.
- Max. Overall drain hose length: 2,50 m (in this case, the maximum height for fixation of hose end is 90 cm).

## **ELECTRICAL CONNECTION**



- *Use a socket with an earth connection.*
- *Do not use extension leads or multi sockets.*
- *The electrical power cable must be replaced exclusively by a licensed electrician.*
- *Electrical connections must correspond to the valid local regulations.*